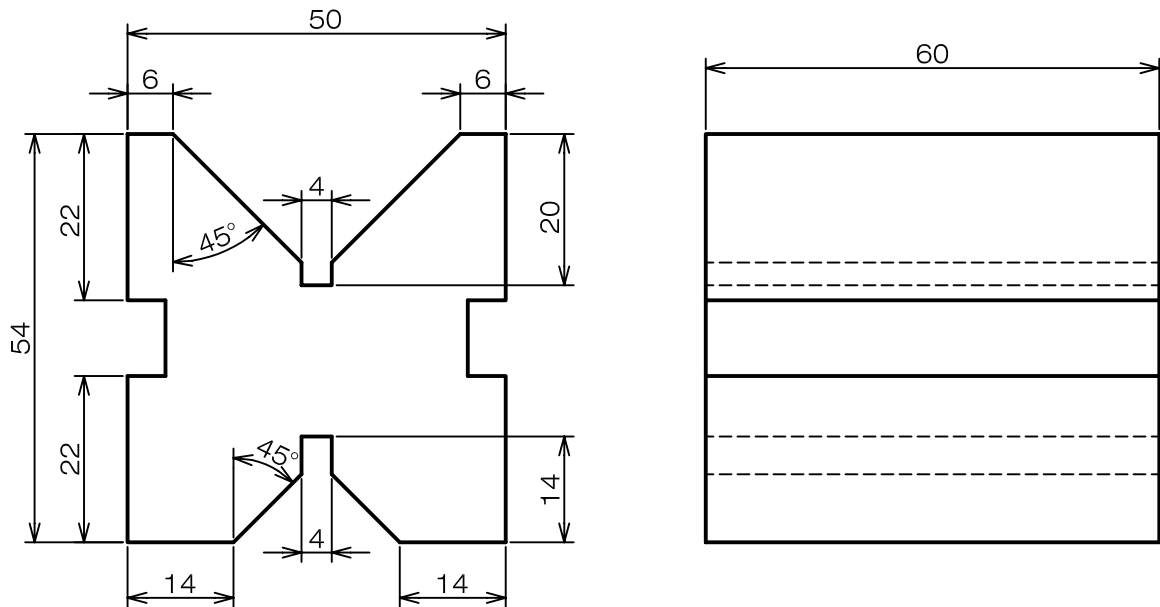
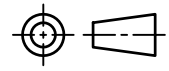


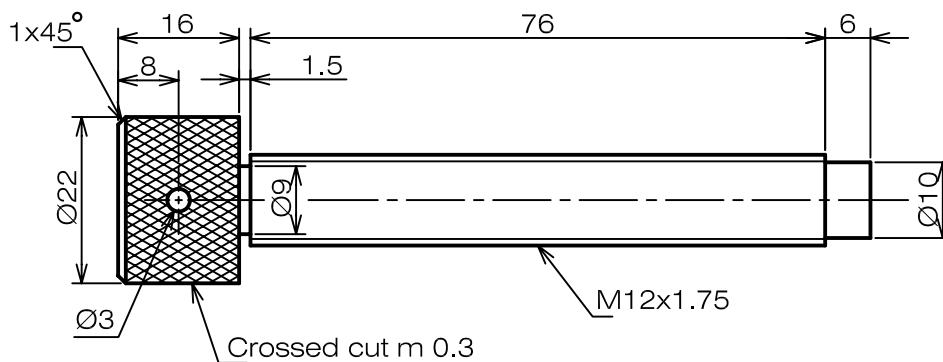
Given detail drawings of parts to be assembled as a V-block clamp, make a one-view assembly drawing.

(Problem is adapted from "Engineering Drawing and Design" by Jensen)



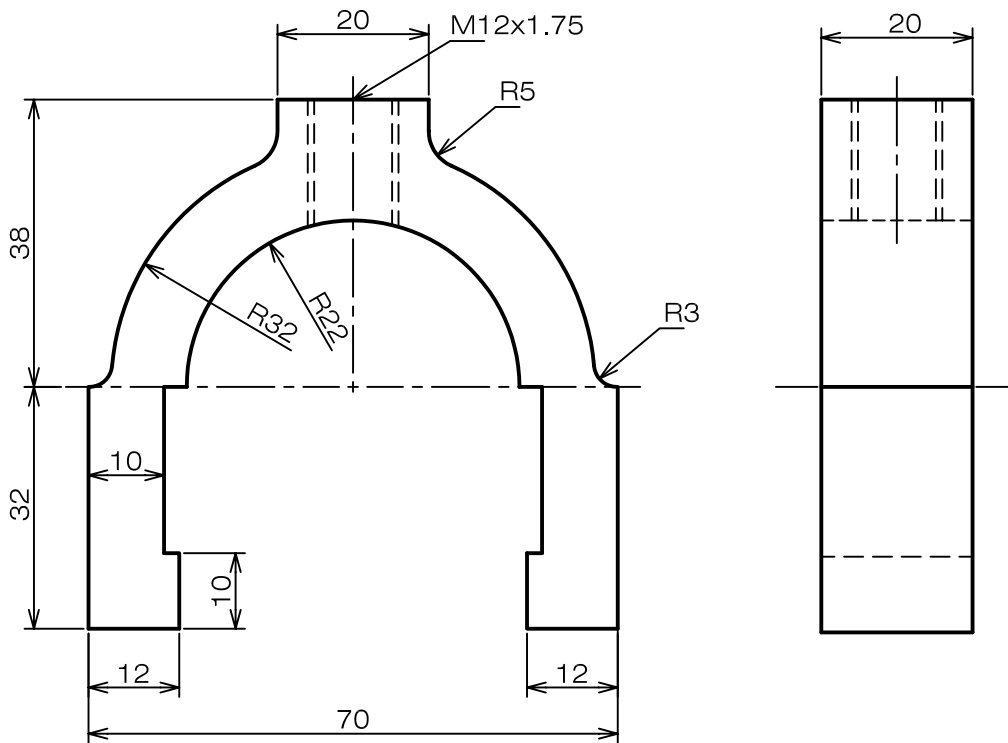
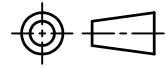
SCALE 1:1

① Base, SAE 1020, 1 REQD.



SCALE 1:1

② Adjusting Screw, SAE 1112, 1 REQD.

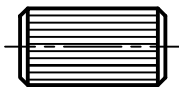


SCALE 1:1

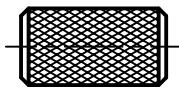
③ Yoke, Cast Steel, 1 REQD.

What can we learn from this drawing?

- Knurling is a process of roughen a cylindrical surface to produce a better grip for the fingers. Knurling is classified into 2 types:- 1) "paralleled or "straight" and 2) "crossed or "diamond".

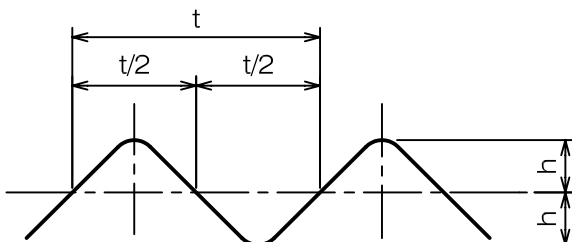


paralleled cut



crossed cut

- The shape of knurling appears on the cutting plane that cut right angle to the groove is shown below. The dimension for knurling according to JIS B0951 is given in the table.



module, m	pitch, t	r	h
0.2	0.628	0.06	0.132
0.3	0.942	0.09	0.198
0.5	1.571	0.16	0.326

Unit : mm